

EDFH series DC Fuse 1000V



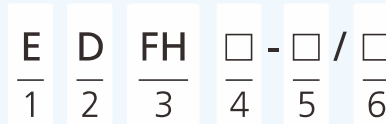
Product Application

EDFH series fuse holder is made of refractory material, and meets the standard of IEC 60947-3. The maximum rated voltage is 1000V and the maximum current is 30A. As a short circuit and over-current protector, it is widely used in the high and low voltage distribution system, control system, and electrical equipments, like distribution box and inverter.

Product Benefits

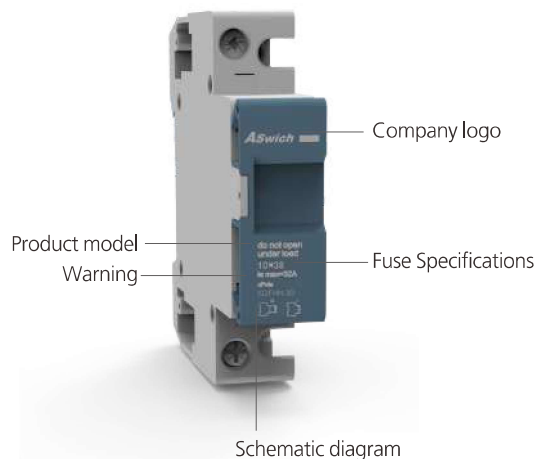
- DIN35 Rail Installation, Easy to Install
- Adjustable terminal block, Wiring firm
- Fire-retardant shell, high temperature resistance
- Flexible installation, Easy to replace

Select Code



Code	Name	Description
1	ASwivch brand	E
2	DC	D
3	Product Code	FH: Fuse Holder
4	Rated voltage	N: 1000VDC
5	Rated current	30: 30A
6	Pole	1:1P Nill:2P

Appearance Introduction



DC FUSE HOLDER

EDFH series Fuse 1000V

Technical Data

PV DC EDFH Fuse Holder Pole	1P
According to	IEC60947-3
Electrical Characteristics	
Rated Working Voltage	1000V DC
Rated Current	30A
Breaking Capacity	20kA
Max Power Dissipation	3W

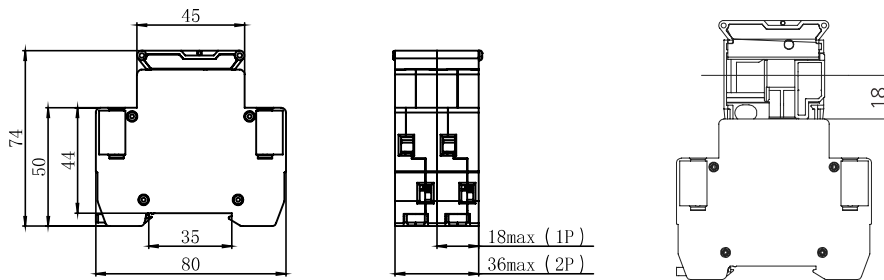
Control and Indication

Connection and Installation Wire	2.5mm ² - 6.0mm ²
Terminal Screws	M3.5
Torque	0.8~1.2N·m
Degree of Protection	IP20

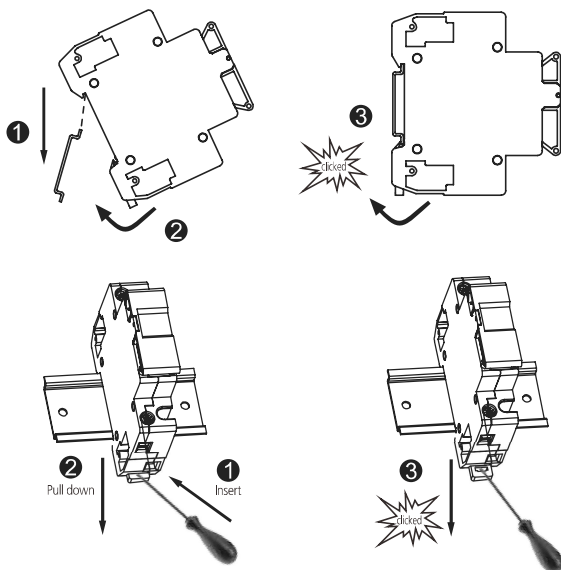
Installation Environment

Fuse Size	10x38mm
Operating Temperature Range	-30°C~+70°C
Mounting	DIN rail IEC/EN 60715
Pollution Degree	3
Relative Humidity	+20°C ≤95%, +40°C ≤50%
Installation Class	III
Weight	0.07kg Per pole

Dimensions



Installation



Replacement Fuse

